

FINAL PROGRAM



CI SUMMIT 2017

Anaheim, California | March 2–5, 2017

Building the Future



PROFESSIONAL
★ EARN UP TO ★
19
DEVELOPMENT HOURS

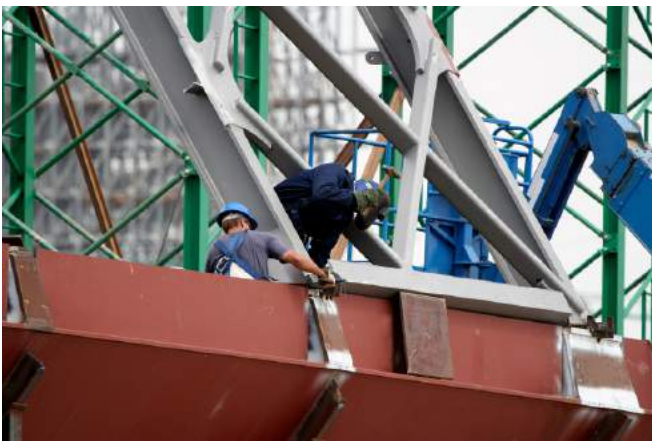
DoubleTree by Hilton Anaheim | Orange County
www.cisummit.org | #CISummit17

Table of Contents

Conference Steering Committee	3
Workshops	4
Conference Agenda	4–11
Tour	11
General Information	12
Hotel Floor Plan	13

Summit Highlights

- Pre-conference workshop on construction technology trends
- Infrastructure panel with Los Angeles-area owners
- Technical sessions on a wide range of construction topics
- Closing plenary luncheon with the Mid-Coast Corridor project team
- Insider site tour of the Gerald Desmond Bridge replacement project
- Networking opportunities



Schedule at a Glance

Thursday, March 2, 2017	
7:30 a.m. – 6:00 p.m.	Registration
8:00 a.m. – 12:00 p.m.	Pre-Conference Workshop: Technology Trends in the Construction Industry, Part 1*
12:00 – 1:00 p.m.	Lunch for Workshop participants
12:00 – 5:00 p.m.	Exhibitor Move-in
1:00 – 5:00 p.m.	Pre-Conference Workshop: Technology Trends in the Construction Industry, Part 2*
6:00 – 7:00 p.m.	Welcome Reception in Exhibit Hall
Friday, March 3, 2017	
7:00 a.m. – 5:00 p.m.	Registration
7:30 – 9:15 a.m.	Plenary Breakfast Owners Panel
9:15 – 9:30 a.m.	Session Break
9:30 – 10:30 a.m.	Technical Session 1: Track A, B, and C
10:30 – 11:00 a.m.	Networking Break in Exhibit Hall
11:00 a.m. – 12 p.m.	Technical Session 2: Track A, B, and C
12:00 – 1:00 p.m.	Exhibit Hall Lunch
1:00 – 2:00 p.m.	Technical Session 3: Track A, B, and C
2:00 – 2:15 p.m.	Session Break
2:15 – 3:15 p.m.	Technical Session 4: Track A, B, and C
3:15 – 3:45 p.m.	Networking Break in Exhibit Hall
3:45 – 4:45 p.m.	Technical Session 5: Track A, B, and C
4:45 – 5:00 p.m.	Session Break
5:00 – 6:00 p.m.	Technical Session 6: Track A and B
6:00 – 7:30 p.m.	Poolside Reception
Saturday, March 4, 2017	
7:00 a.m. – 5:00 p.m.	Registration
7:30 – 8:00 a.m.	Continental Breakfast
8:00 – 9:00 a.m.	Technical Session 7: Track A, B, and C
9:00 – 9:15 a.m.	Networking Break in Exhibit Hall
9:15 – 10:15 a.m.	Technical Session 8: Track A, B, and C
10:15 – 10:30 a.m.	Session Break
10:30 – 11:30 a.m.	Technical Session 9: Track A, B, and C
11:30 a.m. – 1:00 p.m.	Closing Luncheon
11:30 a.m.	Exhibitor Move out
1:30 – 5:00 p.m.	Technical Tour: Gerald Desmond Bridge Replacement Project*
1:30 – 5:00 p.m.	- Management Practices in Construction Committee Meeting - Specifications Committee Meeting
Sunday, March 5, 2017	
8:00 a.m. – 12:00 p.m.	- Digital Project Delivery Committee Meeting - Claims Avoidance & Resolution Committee Meeting - Temporary Structures Committee Meeting

*Additional Ticket Purchase Required

Welcome to CI Summit 2017

Welcome to Anaheim

On behalf of the Construction Institute (CI) of the American Society of Civil Engineers, I would like to welcome you to CI Summit 2017.

The theme of CI Summit 2017 is Building the Future. The Summit's technical program will facilitate the seamless execution of planning, design, construction, and risk mitigation activities for your next project, as well as explore new technologies used by our industry.

The format is three tracks of technical presentations and roundtable discussions, including a track devoted to showcasing CI's newest journal, the *Journal of Legal Affairs and Dispute Resolution in Engineering and Construction*. In addition to a great technical program, you will have opportunities for professional networking, learn about new industry trends and exchange ideas in a relaxed environment.

The technical presentations running on Friday and Saturday will explore innovations in a wide range of areas, including:

- off-site construction;
- risk management and mitigation strategies;
- cloud-based construction management;
- transportation partnerships;
- understanding multi-generational expectations in the workplace; and
- utility investigations.

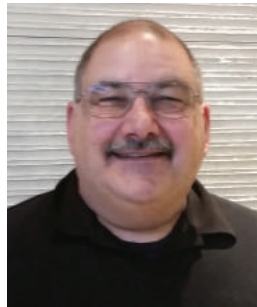
We are excited to feature plenary breakfast panel speakers:

- Rachel Falsetti, Division Chief of Construction, California Department of Transportation;
- Susan R. Rowghani, Director of Water Engineering and Technical Services (WETS), Los Angeles Department of Water and Power;
- Rossana D'Antonio, Deputy Director, County of Los Angeles Department of Public Works; and
- Diego Alvarez, Director of Modernization and Development, Planning & Development Group (PDG) – Los Angeles World Airports.

Our closing luncheon panel will showcase the SANDAG Mid-Coast Corridor Project, with presentations from Greg Gastelum, SANDAG; Ramon Ruelas, SANDAG; Jim Starling, Jacobs; and Andrew Holmquist, Skanska.

Throughout the Summit, attendees can exchange ideas with representatives from leading municipal agencies and owners, peers, the industry's top contractors, engineers, planners, material suppliers, and software vendors during breaks and receptions.

On Saturday afternoon, attendees will enjoy an in-depth tour of the Gerald Desmond Bridge replacement project, a unique \$1.5 billion design-build project.



Thank you for joining us. Enjoy the beautiful weather and fun sights of Southern California, while we deliver you an exciting and engaging conference, providing you with information, inspiration and connections that can be immediately applied to enhance the success of your projects.

Dan Becker, CCM, PMP, CCP, ENV Sp, M.ASCE
HDR Engineering, Inc.

Conference Steering Committee

Conference Chair

Dan Becker, CCM, PMP, CCP, ENV Sp, M.ASCE
HDR Engineering, Inc.

Conference Co-Chair

Craig Ruyle, P.E., M.ASCE
New York State Department of Transportation

Orange County Steering Committee

Thomas Broz, P.E., M.ASCE
Local Chair and Liaison

Juliet Su, P.E., M.ASCE
Transportation Corridor Agencies

Valerie Largin
Western Council of Construction Consumers

ASCE Staff

Katerina Lachinova, CI Director

Susan Long, CI Program Manager

Laura Ciampa, CI Manager,
Communications and Media

Lucy King, CMP, Senior Manager,
Conferences & Meetings

Brittany Boyce, Senior Coordinator,
Conferences & Meetings

Drew Caracciolo, Manager,
Sponsorship, and Exhibit Sales

Conference Agenda

THURSDAY | MARCH 2

Registration

7:30 a.m. – 6:00 p.m. | Foyer

Pre-Conference Workshops

An additional fee is required at time of registration to attend the pre-conference workshops. You must be registered for the conference to attend any of the workshops. ASCE reserves the right to cancel events if minimum registration is not met.

Technology Trends in the Construction Industry, Part 1

8:00 a.m. – 12:00 p.m. (4 PDHs) | Grand Ballroom

Member Rate: \$255 | Non-Member Rate: \$295

Technology Trends in the Construction Industry, Part 2

1:00 – 5:00 p.m. (4 PDHs) | Grand Ballroom

Member Rate: \$255 | Non-Member Rate: \$295

RATES FOR BOTH WORKSHOPS TOGETHER

Member Rate: \$430 | Non-Member Rate: \$490

The technology needs of the construction industry today are changing. Some of these tech trends include emerging mobile technologies, the evolution of ERP (enterprise-resource planning), BIM (building information modeling), big data, and beyond.

We'll take a closer look at the need, the technology, the benefits, the status, the barriers, contact points, and the references that make technology adoption and implementation a reality and explore the tough questions to help the construction industry move to the next level of technology adoption.

BRIAN CAWLEY, FHWA

This brief introduction to the workshop will include an explanation of FHWA's perspective on digital project delivery, with an emphasis on the Every Day Counts program.

DAVID BROWN, PARSONS

Defining Project Scope-Analog to Digital

The traditional approach for describing the scope of a project is to write paragraph after paragraph of narrative and then assemble it into a published document that sometimes reads like a novel, one that needs to be read several times by the potential bidders to grasp the expectations of the facility owner. This analog approach can be systematically converted into a digital

database of requirements that will radically simplify the communication of expectations.

Using a database of requirements has many advantages during the life of a project over the traditional analog approach, including the ability to add classification attributes to each requirement such as discipline, owner, risk, observed performance, system safety item, and acceptance criteria. By defining the number of requirements to be fulfilled, the progress of the work based upon fulfillment of requirements can align beside the typical progress measures of time and dollars expended.

Explore real world examples of the advantages going digital can provide to project delivery teams.

STEPHEN ELLIS, LANGAN

Introduction to Mobile Mapping

Get to know Mobile Mapping basics: history, trends, system components, how it all works together and its ability to produce survey grade accuracy results. Learn about transportation and construction uses in the industry today from real-world project examples, and explore a variety of deliverables and the tools used to work with the Mobile Mapping data.

MANI GOLPARVAR FARD, DEPARTMENT OF CIVIL AND ENVIRONMENTAL ENGINEERING, UNIVERSITY OF ILLINOIS AT URBANA-CHAMPAIGN

Reconstruct: The Future of Project Management

Reconstruct is a web based visual project management tool for improving transparency, accountability, and productivity on construction sites. Explore how the tool takes in images and videos from smartphones, drones, and time-lapse cameras and produces 4D point cloud models, which can then be compared to the Baseline 4D Model and used to show project progress and to track other features of the project.

HOWARD JAMESON, VIBROANALYSIS

The Unmanned Systems Landscape-Applications, Deliverables, Ever Changing Regulations

How are unmanned systems being used in the engineering and construction industry? What regulations do you need to be concerned about? Explore these and other key topics in today's ever-changing construction landscape, including:

- an overview of UAV and Rover systems history, technological development, sensor technologies, and today's latest equipment and accuracy;
- a discussion of how post processing software takes raw data sets and converts information into useable models- and segments to data post processing – including the universal file sets which can be imported into a variety of design systems;

- an exploration of data acquisition methods, collection, processing, and the future of the industry, including tying in progression data sets with a centralized CPM to track project goals and detailed costing; and
- an overview of current and new regulations, with ideas on how we can work together with the FAA on obtaining conditional regulations tailored to the construction/engineering industry.

LENNART ANDERSSON, LIRO

BIM and Virtual Reality in Construction

How is BIM being used to effectively manage construction projects? Explore examples of its use on large transit projects and bridge projects in a large urban area. Learn how virtual reality can also be used on construction projects; particularly as an effective tool for proposal creation.

Welcome Reception

6:00 – 7:00 p.m. | Foyer/Exhibit Area

Sponsored By:



Kick off your conference experience by enjoying hors d'oeuvres and meeting new friends while reconnecting with former colleagues.

Included in Full, Speaker, Moderator, Municipal, Young Professional and Student registration rates.

Additional Tickets: \$95

FRIDAY | MARCH 3

Registration

7:00 a.m. – 5:00 p.m. | Foyer

Speaker Ready Room

7:00 a.m. - 5:00 p.m. | International Center

Plenary Breakfast Owners Panel: Issues with Infrastructure

7:30 – 9:15 a.m. (1PDH) | Grand Ballroom

Sponsored By:



Rachel Falsetti



Susan R. Rowghani



Rossana D'Antonio



Diego Alvarez

Representatives of Caltrans, Los Angeles World Airports, the Los Angeles Department of Water and Power and the County of Los Angeles Department of Public Works, will discuss infrastructure development programs in California, addressing their common issues and sharing their vision for future developments.

Each panel participant will talk briefly (10-12 min) about the infrastructure issues their organization faces going forward and how they are planning to deal with them, followed by a Q&A period.

Speakers: *Rachel Falsetti, Division Chief of Construction, California Department of Transportation; Susan R. Rowghani, P.E., M.ASCE, Director of Water Engineering and Technical Services (WETS), Los Angeles Department of Water and Power; Rossana D'Antonio, P.E., F.ASCE, Deputy Director, County of Los Angeles Department of Public Works; Diego Alvarez, Director of Modernization and Development, Planning & Development Group (PDG) – Los Angeles World Airports.*

Included in Full, Speaker, Moderator, Municipal, Young Professional and Student registration rates.

Additional Tickets: \$80

Session Break

9:15 – 9:30 a.m.

Technical Session 1: Track A, B, and C

9:30 – 10:30 a.m. (1 PDH)

TRACK A, NEWPORT

OPTIMIZING UTILITY INVESTIGATIONS ON LARGE DESIGN-BUILD PROJECTS

Could \$2B on the HART project and \$80M in costs and delays on the Caltrans I-405 expansion have been prevented or mitigated? Existing utilities can present large risks to projects of every kind, including design-build projects. Find out how the proper use and sequencing of utility investigations as delineated in ASCE 38, *Standard Guideline for the Collection and Depiction of Existing Subsurface Utility Data*, can assist in reducing utility risks on design-build projects.

Speaker: *Jim Anspach, PG, F.ASCE, Senior Fellow/Director, Cardno*

Conference Agenda

TRACK B, LAGUNA

THE ROLE OF SPECIFICATIONS IN DISPUTES

Have the General Conditions of the contract clearly defined roles for all parties; presented well prepared specifications that are tailored to project specific needs; and required compliance throughout administration of the contract? Find out how to avoid protests and claims by taking extra care in the contract drafting process.

Speakers: **Monique O'Dwyer, P.E., M.ASCE**, Metropolitan Water District of Southern California; **Ross Standifer, P.E., M.ASCE**, Alan Plummer Associates, Inc.; **Rajesh Singh, M.ASCE**, Ramboll Environ; **Teresa Jablonski, A.M.ASCE**, Nova Consulting; **Rusty Sprouse, P.E., M.ASCE**, Jefferson Lab

TRACK C, REDONDO

LEGAL AFFAIRS AND DISPUTE RESOLUTION PAPER PRESENTATIONS

LADR-305, "Using Early Dispute Resolution Techniques to Reduce Delay and Minimize Project Expense"

Speaker: **Paul M. Lurie**, Mediator & Arbitrator, Schiff Hardin LLP (30 min)

LADR-299, "Identifying and Mitigating the Risks Created by Problematic Clauses in Construction Contracts"

Speaker: **Kevin Walsh** (30 min)

Networking Break

10:30 – 11:00 a.m. | Foyer/Exhibit Area

Sponsored By:



Hill International

Technical Session 2: Track A, B, and C

11:00 a.m. – 12:00 p.m. (1 PDH)

TRACK A, NEWPORT

CRITICAL KEYS TO AVOIDING AND RESOLVING CLAIMS IN DIFFERING SITE CONDITIONS AND/OR UNDERGROUND INFRASTRUCTURE PROJECTS

Courts across the country have outlined critical keys to handling underground projects. In a fast-paced, interactive information-packed seminar, learn how to use these principles to your advantage in the handling of differing site conditions and the claims they can create, including: delay, constructive acceleration, quantum meruit, and force majeure.

Speaker: **Mark Stapke**, Founding Partner, Stapke Law LLP

TRACK B, LAGUNA

BUILDING THE FUTURE OF TRANSPORTATION THROUGH PARTNERSHIP

The owner, program management team, designer, contractor, construction management team, and public outreach team of a major Orange County project will hold a panel discussion on how their partnership worked to successfully deliver the project.

Moderator: **Bernadette Duran-Brown**, Partner, Nossaman LLP

Speakers: **Kelly Hart**, Orange County Transportation Authority (Owner); **Mary Shavaliar**, Orange County Transportation Authority (Owner); **Jim Hecht**, HDR Engineering Inc. (Program Manager); **Terry Nash**, HNTB (Designer)

TRACK C, REDONDO

LEGAL AFFAIRS AND DISPUTE RESOLUTION PAPER PRESENTATIONS

LADR-320, "Optimizing The Resolution of Disputes on Construction Projects"

Speaker: **Lynn Beck Larsen** (30 min)

LADR-302, "Particular Conditions to Cover Potential Risks of Construction Projects"

Speaker: **Amr Ibrahim** (30 min)

Exhibit Hall Lunch

12:00 – 1:00 p.m. | Foyer/Exhibit Area

Technical Session 3: Track A, B, and C

1:00 – 2:00 p.m. (1 PDH)

TRACK A, NEWPORT

WOMEN LEADERS IN TRANSPORTATION | A CONVERSATION

Come join us! This session will be an informative dialogue between our moderator, panel members, and you about the importance of leadership in the transportation sector – from a woman's perspective. You will have an opportunity to engage with women serving in high-profile positions within both the public and private sector. They will share their stories and advice – everything from career path choices and the importance of relationship building, to the influence that emerging trends/technologies will have on the way we do business. They will also offer insights into a few "tricks of the trade" – how to improve the impression you make when connecting with prospective clients/teaming partners, winning the job, and then successfully delivering it. Women exude confidence differently than men, so have you ever asked yourself what impression you leave? Participating in this conversation might help you find out!

Moderator: Julie Vandermost Beeman, President, VCS Environmental

Speakers: Rose Casey, Director of Highway Programs, Orange County Transportation Authority; **Paula Beauchamp**, Director of Project Delivery, San Bernardino County Transportation Authority; **Sunnie House**, Vice President, Transportation Business Line Leader, San Diego & Southern Nevada, AECOM; **Jacqueline Patterson**, Vice President, Jacobs

TRACK B, LAGUNA

USE OF CONSTRUCTION DOCUMENTS FOR EARLY DETECTION OF POTENTIAL CONSTRUCTION PHASE ISSUES

The tracking and monitoring of standard construction phase documentation such as RFIs, PCOs, and submittals, as well as underlying schedule information, can provide an early warning of potential issues. Develop a better understanding of project controls data and learn techniques on how to monitor and track project data that is already being collected, in order to develop a more robust picture of the project status.

Speaker: David Ponte, P.E., M.ASCE, Arcadis North America

TRACK C, REDONDO

LEGAL AFFAIRS AND DISPUTE RESOLUTION PAPER PRESENTATIONS

LADR-307, "Notice Requirements under Standard Construction Contract Conditions I: Classification Matrix and Analysis"

Speaker: Mohamed-Asem Uthman Abdul-Malak (30 min)

LADR-308, "Notice Requirements under Standard Construction Contract Conditions II: Administration of Structured Notices"

Speaker: Mohamed-Asem Uthman Abdul-Malak (30 min)

Session Break

2:00 – 2:15 p.m. | Foyer/Exhibit Area

Technical Session 4: Track A, B, and C

2:15 – 3:15 p.m. (1 PDH)

TRACK A, NEWPORT

GERALD DESMOND BRIDGE REPLACEMENT PROJECT

The Gerald Desmond Bridge has been designated as a National Highway System Intermodal Connector Route and part of the Federal Strategic Highway Network. It is a critical structure serving the ports of Long Beach and Los Angeles, the City of Long Beach, Los Angeles and Orange counties, and the nation. The new bridge will be built with a cable-stayed design with a 205'

vertical clearance to accommodate the newest generation of the most efficient cargo ships. Stakeholders will discuss the planning, execution and current progress of this \$1.2B project.

Moderator: Bob Schraeder, P.E., M.ASCE, Project Manager, SFI Gerald Desmond Bridge

Speaker: Al Moro, P.E., M.ASCE, Gerald Desmond Bridge Project Executive, Port of Long Beach

TRACK B, LAGUNA

IMPROVING EFFICIENCY THROUGH INTEGRATED CLOUD-BASED CONSTRUCTION MANAGEMENT

The City of Los Angeles and CH2M Hill will discuss how they are managing the construction of the new \$100M Wastewater Information Network System (WINS) program with cloud-based, project management technology. Hear the perspectives of the city and the program manager on how they are simplifying the change order process to save time, control costs, and improve outcomes. Explore the use of a cloud-based construction management system on a complex, long-term engineering project.

Speakers: Sam Alavi, M.S., P.E., P.M., Project Manager, City of Los Angeles, Wastewater Engineering Services Division; **Mike Tovar, P.E., PMP.**, LAWINS Project Manager, CH2M Hill; **Eric Law**, Senior Director, Bentley

TRACK C, REDONDO

LEGAL AFFAIRS AND DISPUTE RESOLUTION PAPER PRESENTATIONS

LADR-300, "Introducing the Arbitrating Party Utility Function: An Expected Utility Approach"

Speaker: Ahmad Essam Alozn (30 min)

LADR-313, "Studying Contract Provisions of Shared Responsibilities for Integrated Project Delivery under National and International Forms"

Speaker: Haiyan Xie (30 min)

Networking Break

3:15 – 3:45 p.m. | Foyer/Exhibit Area

Sponsored by:



Conference Agenda

Technical Session 5: Track A, B, and C

3:45 – 4:45 p.m. (1 PDH)

TRACK A, NEWPORT

SOLVING SERIOUS ETHICAL DILEMMAS

Engineers face serious ethical dilemmas and it can be a struggle to determine the best path forward. Fulfill your licensing requirement and explore some interesting case studies, as well as some background philosophical concepts and the ASCE Code of Ethics.

Speakers: **Steve Starrett, Ph.D., P.E., D.WRE, F.ASCE, F.EWRI**, Associate Professor of Civil Engineering, Kansas State University; **Carlos Bertha, Ph.D.**, Associate Professor of Ethics, US Air Force Academy

TRACK B, LAGUNA

BUILDING THE FUTURE USING OFF-SITE CONSTRUCTION TECHNIQUES

Learn how off-site construction can improve construction productivity, safety, and quality. Off-site construction is the planning, design, fabrication and assembly of building elements at a location other than their final, installed location to support rapid and efficient construction of a permanent structure. Critical components of successful off-site construction projects are integrated planning and supply chain optimization. The moderator will provide a brief overview of research conducted by the Off-Site Construction Council, which is part of the National Institute of Building Sciences. The panel will then share their successes in implementing off-site construction techniques.

Moderator: **John Schaufelberger, Ph.D., P.E., M.ASCE**, University of Washington

Speakers: **Daniel Shirkey**, Senior Director of Technology and Operations Improvement, Balfour Beatty; **Lyle Eiseman**, Operating Group Safety Director, Mortenson Construction

TRACK C, REDONDO

LEGAL AFFAIRS AND DISPUTE RESOLUTION PAPER PRESENTATIONS

LADR-304, "Intelligent Contracts and the Construction Industry"

Speaker: **Jim Mason** (30 min)

LADR-309, "Conceptualization of the Contractor's Project Management Group Dynamics in Claims' Initiation and Documentation Evolution"

Speaker: **Mohamed-Asem Uthman Abdul-Malak** (30 min)

Session Break

4:45 – 5:00 p.m. | Foyer/Exhibit Area

Technical Session 6: Track A and B

5:00 – 6:00 p.m. (1 PDH)

TRACK A, NEWPORT

ENHANCING CONSTRUCTION SAFETY THROUGH PROPER PLANNING OF LOAD HANDLING ACTIVITIES

Explore crane lift planning techniques, as well as alternate lifting/load handling systems (jack and slide, gantry systems, platform trailers, modular lifting towers), which require particular elements for planning load handling activities. Familiarize yourself with the new regulations (OSHA 1926 Subpart CC), plus published consensus standards such as ASME P30.1 and other lift planning literature to enable yourself to more effectively develop a proper "lift plan."

Speakers: **Scott R. Fletcher, M.S., P.E., M.ASCE**, Civil/Structural & Rigging Engineer; Cowles, Murphy, Glover & Assoc.; **Tim L. Parker, P.E., PMP, M.ASCE**, Principal, Parker Consulting Engineers, LLC

TRACK B, LAGUNA

LIFE CYCLE SUSTAINABILITY OF ASPHALT CONCRETE PAVEMENTS

Experts from agencies and academia will share recent advances and developments associated with sustainability concepts in every stage through the entire life cycle of pavement infrastructure from planning, design, materials selection, construction, maintenance and operations, preservation, and recycling. Learn about new prospects, opportunities, and challenges in the field.

Speakers: **Baoshan Huang, Ph.D., P.E., M.ASCE**, University of Tennessee; **Jenny Liu, P.E., M.ASCE**, University of Alaska Fairbanks; **Wayne Lee, Ph.D., P.E., F.ASCE**, University of Rhode Island; **John Harvey, P.E., M.ASCE**, University of California Davis; **Rita Leahy**, California Asphalt Pavement Association

Poolside Reception

6:00 – 8:00 p.m. | Atrium/Pool Deck

Join us on the pool deck for cocktails and appetizers, while mingling with colleagues to the sounds of local live musicians.

SATURDAY | MARCH 4

Registration

6:30 a.m. - 12:00 p.m. | Foyer

Speaker Ready Room

6:30 a.m. - 12:00 p.m. | International Center

Continental Breakfast

7:30 a.m. - 8:00 a.m. | Foyer/Exhibit Area

Sponsored By:



Technical Session 7: Track A, B, and C

8:00 – 9:00 a.m. (1 PDH)

TRACK A, NEWPORT

THE U.S. CRAFT LABOR SHORTAGE AND ITS EFFECTS ON PROJECT PERFORMANCE

A shortage of skilled, qualified construction craft labor has been an unfortunate recurring trend in the US construction industry for the past three decades, and has had a measurable impact on project performance. The craft labor shortage will likely not be resolved until structural changes occur in both the attitudes toward and availability of career and technical education (CTE), but there are practices owners and contractors can adopt to improve the availability of qualified craft labor on their projects.

Speakers: Paul M. Goodrum, P.E., Ph.D., *University of Kentucky*; Timothy R.B. Taylor, P.E., Ph.D., *University of Kentucky*

TRACK B, LAGUNA

FINANCE AND DELIVERY OF INFRASTRUCTURE IN THE 21ST CENTURY UTILIZING ALTERNATIVE DELIVERY METHODS AND PRIVATE PARTICIPATION

Over the past few years a number of states have expanded procurement statutes allowing governmental entities to seek public improvements by utilizing a best value approach rather than the traditional design bid build method. More recently, statutes have been enacted to promote partnerships between public and private entities, shifting traditional public sector responsibilities such as financing to the private sector, and allowing private entities to participate in revenue producing opportunities resulting from the development of improvements that had been traditionally reserved for development by governmental entities. The presenters will discuss some of the statutory changes which facilitate alternative delivery models and public private partnerships, and will discuss

some alternative delivery and public private partnership ("P3") form documents currently available including new EJCDC Design Build and P3 forms.

Speakers: Justin Weisberg, P.E., M.ASCE, *Partner, K&L Gates LLP*, Brian Johnson, P.E., M.ASCE, *Senior Attorney, Contracting Group Leader and Associate Vice President of Enterprise Operations, HNTB Corporation*, Ron Zitterkopf, Ph.D., P.E., F.ASCE

TRACK C, REDONDO

LEGAL AFFAIRS AND DISPUTE RESOLUTION PAPER PRESENTATIONS

LADR-301, "The Knowns and Unknowns of Concurrent Delay"

Speaker: Lynn Larsen

LADR-312, "Modeling the Relationship between Risk and Dispute in Subcontractor Contracts"

Speaker: Deniz Artan Ilter (30 min)

Networking Break

9:00 – 9:15 a.m.

Technical Session 8: Track A, B, and C

9:15 – 10:15 a.m. (1 PDH)

TRACK A, NEWPORT

DEVELOPING THE NEXT GENERATION OF LEADERS WITHIN YOUR COMPANY

Join this panel of representatives of several generations in an interactive discussion about how we relate to one another and strategies we can use to increase communication and understanding, while mentoring new generations to take their place in the construction industry.

Moderator: Dan Becker, CCM, PMP, CCP, ENV SP, M.ASCE, *HDR Engineering, Inc.*

Speakers: Brent Kollars, *HDR Engineering, Inc.*; Yvonne Lopez-Diaz, *HNTB Corporation*; Lawrence Texada, *Lane Construction*; Bob Schraeder, P.E., M.ASCE, *Shimmick Construction*

Conference Agenda

TRACK B, LAGUNA

THE ANATOMY OF DISPUTES

Gain an understanding of a typical dispute matter from inception (i.e., request for change) through entry into dispute resolution proceedings (negotiation, mediation, arbitration, litigation). Explore common project contract and execution factors that typically influence causation and resolution of a dispute (either to promote or prevent) and which should be considered by each project participant from the perspective of project design, estimating, procurement, and construction management.

Moderator: John Ciccarelli, P.E., M.ASCE, Marsh Risk Consulting

Speakers: Michael Radbill, P.E., F.ASCE, Hill International; Thomas Mitchell, III, P.E., M.ASCE, Urban Engineers, Inc.; Chip Ossman, A.M.ASCE, Ossman Project Management Consulting Inc.; David Ponte, P.E., M.ASCE, Arcadis North America

TRACK C, REDONDO

LEGAL AFFAIRS AND DISPUTE RESOLUTION PAPER PRESENTATIONS

LADR-306, "Impact of Change Orders on Cost and Schedule of Rural Road Maintenance Projects"

Speaker: Pramen Prasad Shrestha (30 min)

LADR-311, "Culture-Risk-Trust Model for Dispute Resolution Methods' Selection in International Construction Contracts"

Speaker: Ghada M. Gad (30 min)

Networking Break

10:15 – 10:30 a.m.

Technical Session 9: Track A, B, and C

10:30 – 11:30 a.m. (1 PDH)

TRACK A, NEWPORT

SPECIAL INSPECTION

The International Building Code contains requirements for detailed structural inspection of buildings that are critical for public safety, or exceed a certain threshold for occupancy. These requirements are detailed in Chapter 17, *Structural Tests and Special Inspections*. However, the implementation of Special Inspection varies widely across jurisdictions across the country. In some cases, local certification for Special Inspectors allows

vocational practitioners to be responsible for this activity, without being licensed as either a Professional Engineer or Registered Architect. This session will cover some of the history of special inspections, an overview of the responsibilities established within the building code, and the implications on the responsibility of civil engineers to protect the public health, safety, and welfare. This session will not be a detailed description of all of the tasks involved in Special Inspection, but will focus on the larger professional practice issues.

Speakers: Mark Baker, P.E., M.ASCE, IBA Consultants; Raj Nathan, Senior Vice President at International Accreditation Service; Sandi McCracken, Senior Manager FA-MB-MBA Programs, International Accreditation Service

TRACK B, LAGUNA

MOCK MEDIATION

This session will present an actual claim resolved through the mediation process, to demonstrate how mediation can produce timely and cost-effective resolutions for engineering and construction disputes and explain the typical mediation process for an engineering and construction industry dispute. Presenters will role-play the Mediator, the Designer, the Contractor, and the Subcontractor involved in a dispute over their contracted responsibilities in a design-build hospital project. Attendees will increase their understanding of the mediation process, procedures, and party participations.

Moderator: Chip Ossman, A.M.ASCE, Ossman Project Management Consulting Inc.

Speakers: David Ponte, P.E., M.ASCE, Arcadis North America; Thomas Mitchell, III, P.E., M.ASCE, Urban Engineers, Inc.; Joe Hellenbrand, P.E., PSP, M.ASCE, Capital Project Management, Inc.

TRACK C, REDONDO

LEGAL AFFAIRS AND DISPUTE RESOLUTION PAPER PRESENTATIONS

LADR-316, "Dispute Resolution and Contract Incentives: Perceptions of Project Stakeholders"

Speaker: Kelly Strong (30 min)

LADR-319, "Identification and Classification of Root-causes of Construction Claims"

Speaker: Asra Ghadakzadeh (30 min)

Closing Plenary Luncheon

11:30 a.m. - 1:00 p.m. (1 PDH) | Grand Ballroom

2017 Construction Management Award Presentation to Lucio Soibelman, Ph.D., P.E., F.ASCE, *Department of Civil & Environmental Engineering, University of Southern California.*

MANAGING AND IMPLEMENTING CM/GC CONTRACTS FOR MID-COAST CORRIDOR PROJECTS

SANDAG, Jacobs and Skanska will share their experiences on the Mid-Coast project, passing on strategies to effectively identify roles and responsibilities on a CM/GC contract; define QC/QA roles on a CM/GC contract; identify risks and opportunities on a CM/GC project; and allocate costs with multiple funding sources.

Speakers: Greg Gastelum, SANDAG; Ramon Ruelas, SANDAG; Jim Starling, Jacobs; Andrew Holmquist, P.E., M.ASCE, Skanska

Technical Tour: Gerald Desmond Bridge Replacement Project

1:30 – 5:00 p.m.

Meet in the lobby of the hotel at 1:15 p.m. The bus will leave at precisely 1:30 p.m.

Long pants and closed toed shoes are required. Additional safety equipment will be provided onsite.

The Gerald Desmond Bridge has been designated as a National Highway System Intermodal Connector Route and part of the Federal Strategic Highway Network. It is a critical structure serving the ports of Long Beach and Los Angeles, the City of Long Beach, Los Angeles and Orange counties, and the nation. Over the 4 years of construction and demolition, the work is expected generate about 3,000 jobs a year. The new bridge will be built with a cable-stayed design with a 205’ vertical clearance to accommodate the newest generation of the most efficient cargo ships. In addition, the new bridge will be wider and better able to accommodate future traffic growth.

Additional Ticket: \$90

Committee Meetings

Saturday, March 4, 2017

Time:	Meeting:	Location:
1:30 – 5:00 p.m.	Management Practices in Construction	International Boardroom
1:30 – 5:00 p.m.	Specifications	International Center

Sunday, March 5, 2017

8:00 a.m. – 12:00 p.m.	Digital Project Delivery	Sierra Boardroom
8:00 a.m. – 12:00 p.m.	Claims Avoidance and Resolution	Shasta
8:00 a.m. – 12:00 p.m.	Temporary Structures	TBD



General Information

ADA Compliance

The DoubleTree by Hilton Anaheim – Orange County is fully accessible to the disabled. If you require special assistance at the conference, please reach out to the conference or hotel staff. While ASCE will make every effort to meet the needs of the disabled, accommodations cannot be guaranteed without prior notification.

Attendee Packets

Advance registrants will receive their name badges and any tickets ordered at the registration desk during registration hours. On-site registrants should present the official registration receipt to on-site registration staff to obtain conference materials.

Badge Policy and Ribbons

Your name badge is your admission to the conference. Please wear your badge at all times while in the hotel. Tickets are required for the pre-conference workshops, meals, and special events. Where tickets are required, please be sure to bring your tickets with you to each event as you will not be admitted without a ticket. Ribbons will be available at the registration desk. ASCE recommends you remove your badge when leaving the hotel.

Meeting Room Overcrowding

ASCE will make every effort to schedule events in rooms large enough to accommodate anticipated attendance. ASCE and the hotel are REQUIRED to follow local fire regulations and may ask participants in rooms filled to capacity to choose another event.

No Smoking Policy

ASCE supports a "No Smoking" policy. Smoking is prohibited in the DoubleTree by Hilton Anaheim and all venues hosting ASCE events.

Post-Conference Evaluation

In addition to daily surveys, an electronic evaluation will be sent out immediately after the Conference to all attendees.

Professional Development Hours (PDHs)

You may earn PDHs, which are nationally recognized units of record, by attending pre-conference workshops and conference concurrent sessions. Please note there are differences from state to state in continuing education requirements for professional engineering licensure. Each state licensing board has the final authority to approve course credits (PDHs) and other methods of earning credits in that state. ASCE strongly recommends that individuals regularly check with their state licensing boards for specific continuing education requirements in their jurisdictions that affect professional engineering licensure and the ability to renew licensure.

Recording of Sessions

Video or audio recording of any educational session is strictly prohibited without prior written permission from both ASCE and the session presenter(s).

Release/Waiver/Special Assistance Photograph Release:

Liability Waiver: I agree and acknowledge that I am undertaking participation in ASCE events and activities at my own free and intentional act, and I am fully aware that possible physical injury might occur to me as a result of my participation. I give this acknowledgement freely and knowingly that I am, as a result, able to participate in ASCE events, and I do hereby assume responsibility for my own well-being. I also agree not to allow any other individual to participate in my place.

Photographs and videos of the event may be taken by ASCE, its agents, contractors, or representatives, and such photographs and videos may be used for any purpose at ASCE's discretion.

Assumption of Risk

All ASCE events and activities are purely voluntary activities; and attendees are fully responsible for their own conduct and well-being, including without limitation, determining their level of fitness to take part in any such event or activity. In participating in any event or activities, attendees shall be deemed to understand and accept all risk of possible physical injury might occur as a result of such participation.

Tour Policy

Tours will depart from the hotel to take you to your destination, so plan to arrive promptly as buses will leave on time. Tours are available on a first come, first serve basis and have limited capacity. A separate registration fee is required to offset the costs involved with the tours. ASCE reserves the right to cancel a tour if the minimum registration is not met.

Medical Emergencies

ASCE hopes that your visit to the conference will be free from illness or injury, but in case you or a family member needs medical attention during your stay at the hotel, please contact the Front Desk from any house phone. For life threatening emergencies, such as chest pain, shortness of breath, or severe abdominal pain, please call 911.

Hotel Floor Plan

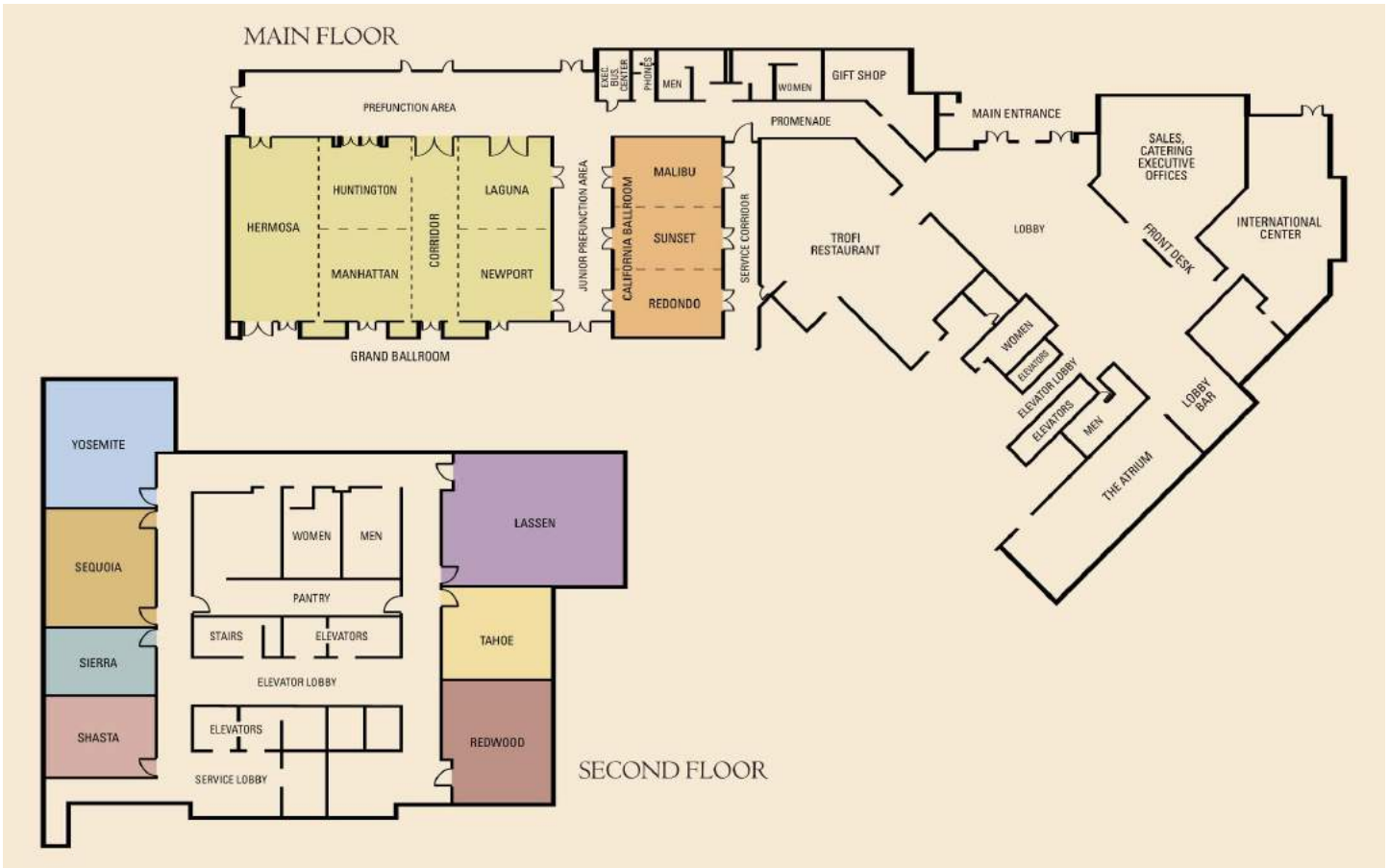


Exhibit Hall Hours

Move-In Thursday March 2 | 12:00 - 5:00 p.m.

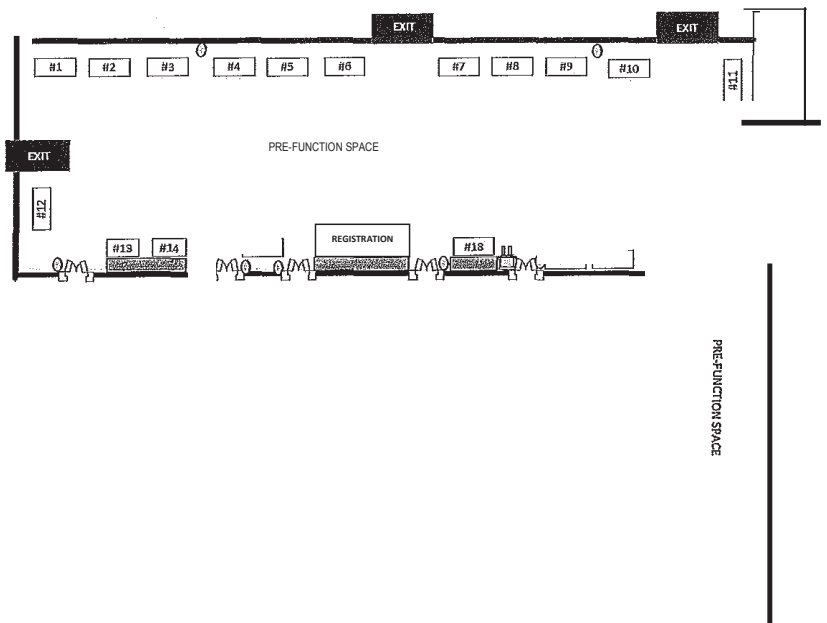
Thursday March 2 | 6:00 - 7:00 p.m.

Friday March 3 | 7:00 a.m. - 7:30 p.m.

Saturday March 4 | 7:00 - 11:30 a.m.

Move-Out Saturday March 4 | 11:30 a.m.

MAIN EXHIBITION HALL FLOORPLAN



Thank you to Our Sponsors!

Platinum



Gold



Corporate Sponsors



Silver



Bronze



Cooperating Organizations

